

# Creating Infrastructure

Moderated by **Irina Sennikova**, Rector, RISEBA, Latvia

**Le Roux Franken**, Deputy Director: Bellville Park Campus  
Information and Communication Technology, USB, South  
Africa

**Jim Ellert**, Emeritus Professor and former Associate Dean of  
Faculty, IMD, Switzerland, CEEMAN IMTA Academic Director



# Creating modern stimulating learning environment

---

- Physical infrastructure
- IT infrastructure
- Modern learning technologies
- Support of international diversity

... ..

- Relation to the school's mission
- Financing



**RISEBA**  
Riga International School of Economics  
and Business Administration

**20** A GATEWAY  
TO INTERNATIONAL  
CAREERS  
**YEARS**



**CEEMAN Deans and Directors Meeting**  
*Management Development Institution Building in Growth Economies*  
27 September 2012, Bellville, Cape Town, South Africa

# Vision - University of Business Arts and Technology

**RISEBA  
Business  
School**



**Faculty of Media  
and  
Communications**



**Faculty of  
Architecture and  
Design**



## Study areas

•Business and Management  
•Economics

•Arts  
•Communications

•Architecture  
•Design



# RISEBA contribution to the development and cultural regeneration of an industrial area



Creative quarter  
infrastructure  
Cleaned up environment  
education+culture+industry

# Architecture and Media Centre H<sub>2</sub>O 6

Investment in **2009-2011 - 2.100.000 EUR**



**1.850.000 EUR infrastructure**



**150.000 EUR equipment of classrooms**



**100.000 EUR technical equipment**





ment

with E  
a





Rīgas Starptautiskās ekonomikas un biznesa administrācijas augstskolas Arhitektūras un mediju centrs  
Centre of Architecture and Media of Riga International School of Economics and Business Administration



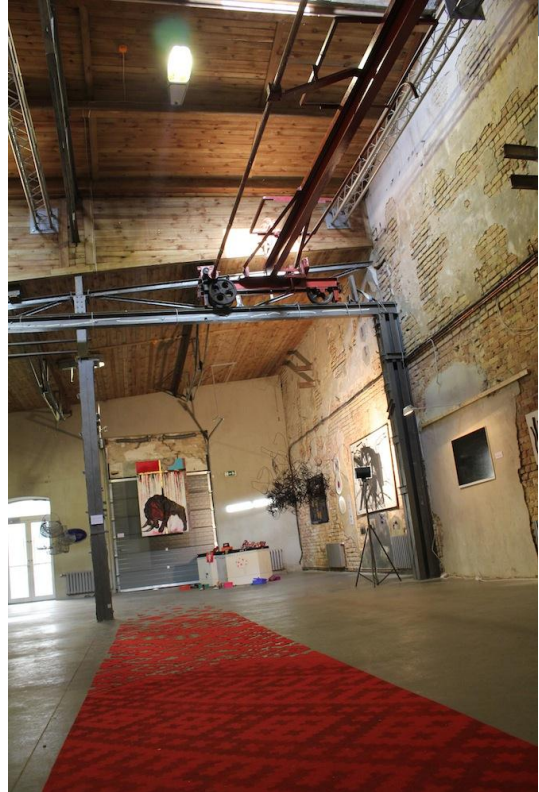


Building in Growth Economies  
Cape Town, South Africa









*arth Economies*

27 September 2012, Bellville, Cape Town, South Africa









**CEEMAN Deans and Directors Meeting**  
*Management Development Institution Building in Growth Economies*  
27 September 2012, Bellville, Cape Town, South Africa



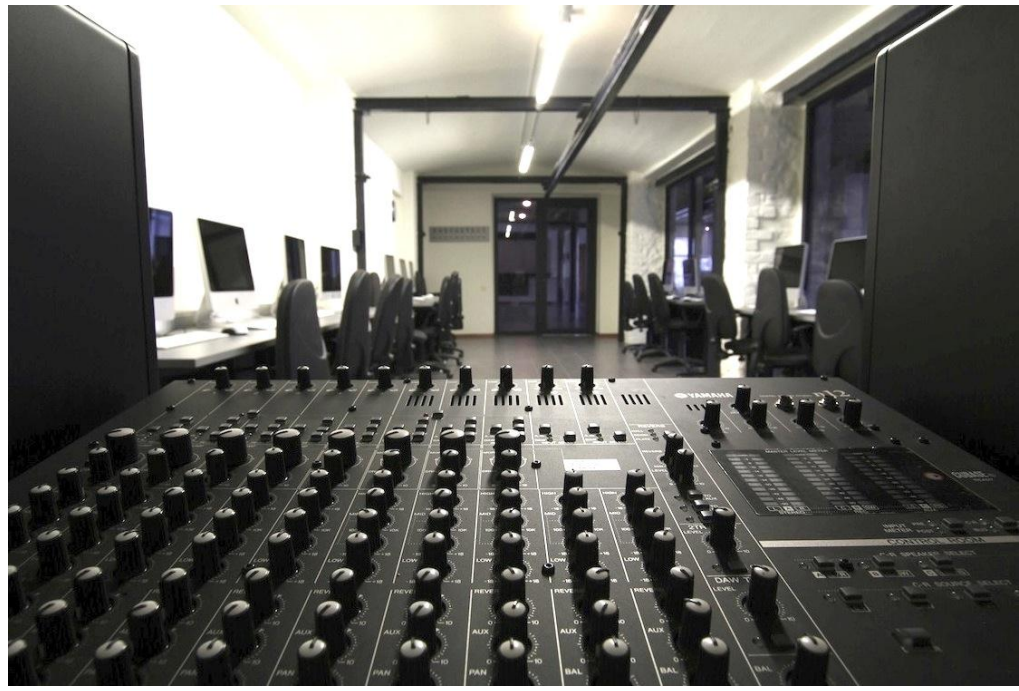






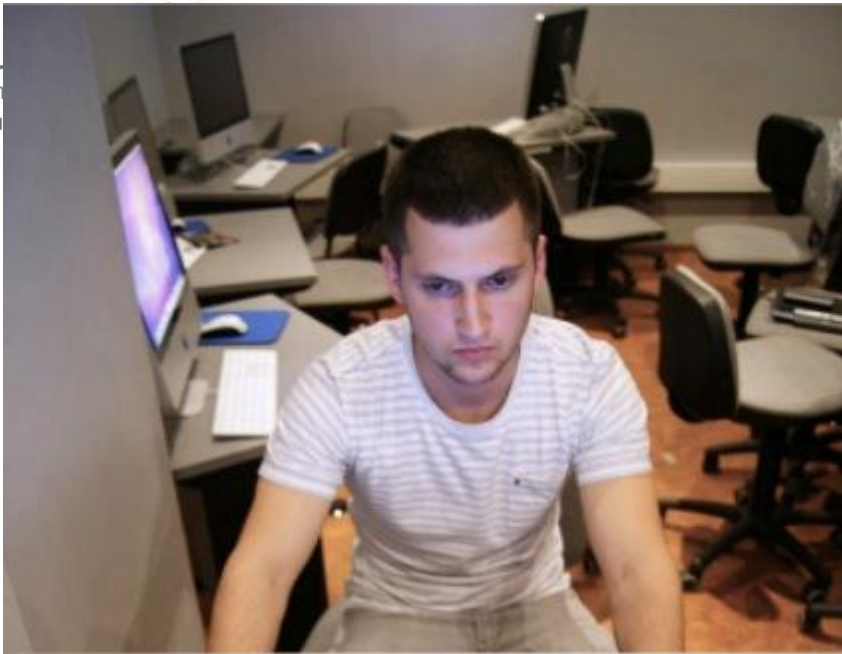
27 September 20







U  
Un  
Bu

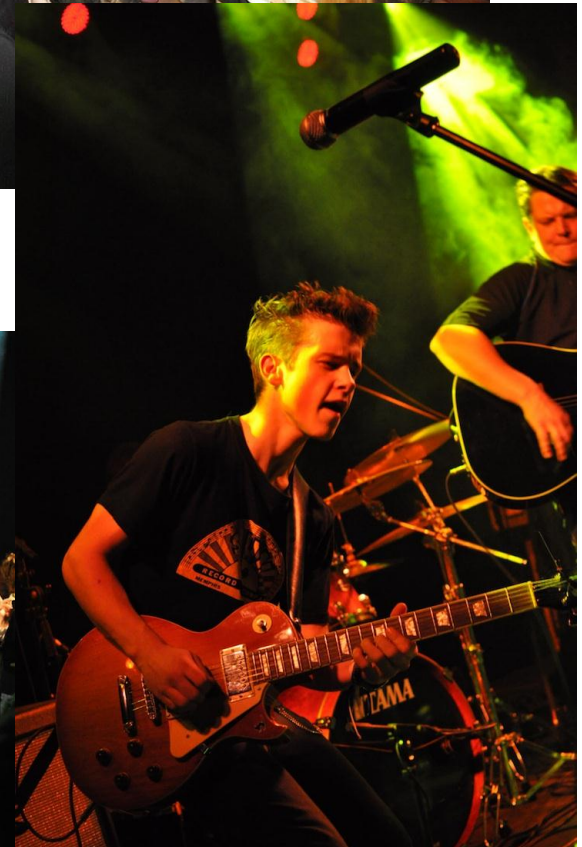


and

***Management Development Institution Building in Growth Economies***

27 September 2012, Bellville, Cape Town, South Africa

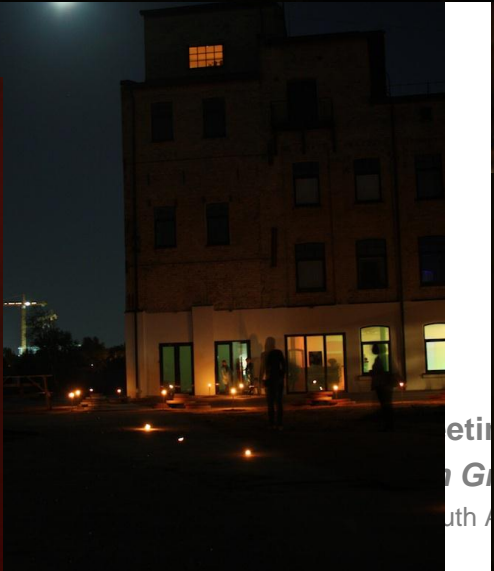




***Management Development Institution Building in Growth Economies***

27 September 2012, Bellville, Cape Town, South Africa





etini  
o G  
uth A





s M  
ing  
n, South Africa



# RISEBA Future Development

Development of university campus

## RISEBA Creative Quarter

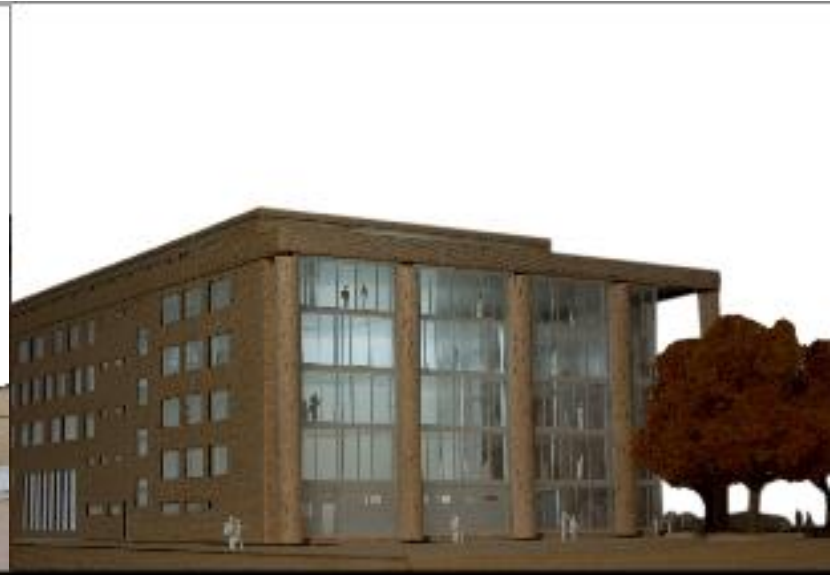
Already invested ~ 2.500.000 EUR

**Planned investment –  
13.500.000 EUR** including

**12.000.000 EUR** - construction

**1.000.000 EUR** – equipment

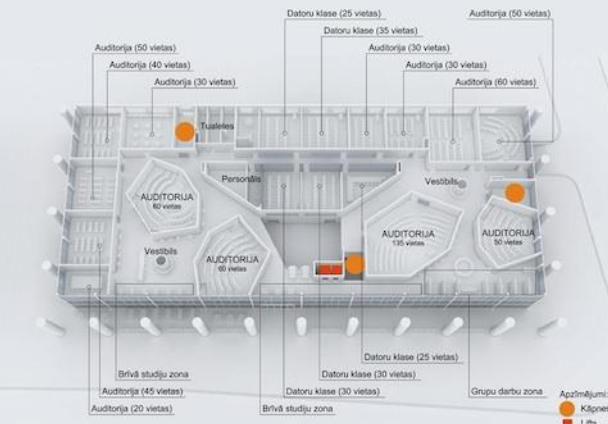




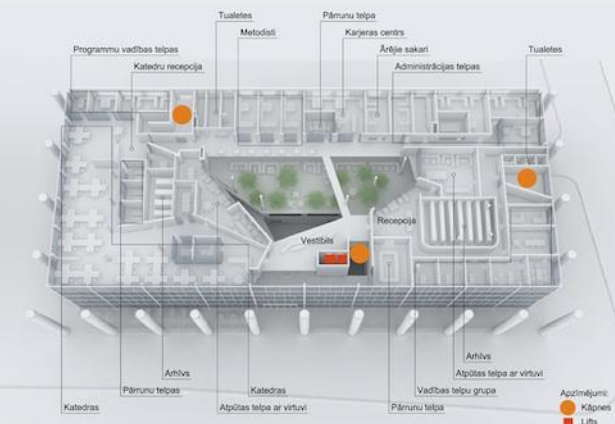




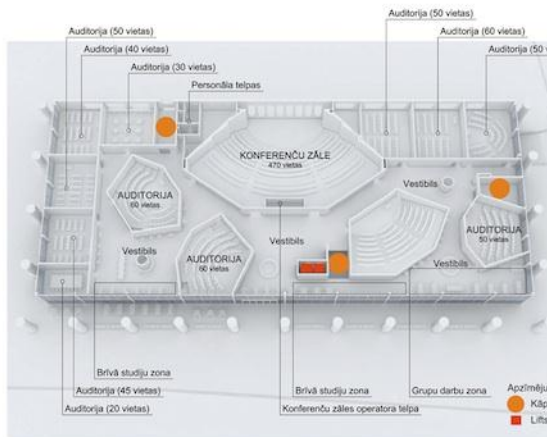
3. stāvs



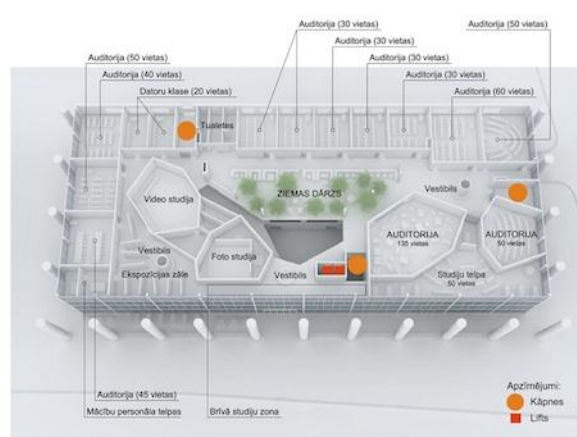
5. stāvs



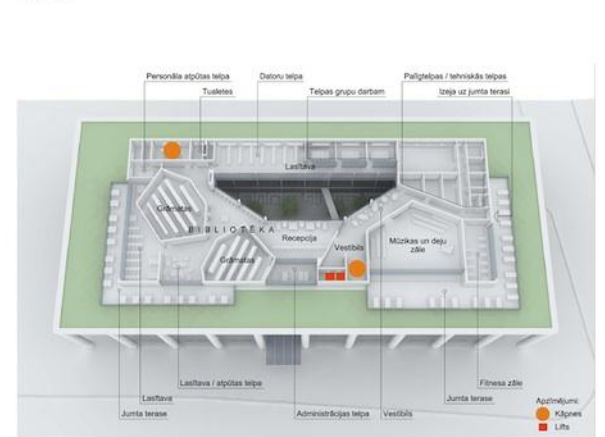
2. stāvs



4. stāvs



Jumta stāvs



# EQ+IQ/m<sup>2</sup>

**RISEBA Creative quarter is a place, with the highest density ratio of emotional and intellectual quotient per square meter in Riga**

*RISEBA Creative Quarter.  
The Place for your Smart growth.*

